



# HRV 100 GLOBE

**POT. TOT. KW**  
4,9 - 13,2

**POT. NOM. KW**  
4,4 - 12,1

**POT. H<sub>2</sub>O KW**  
3,8 - 10,1



BIANCO  
WHITE  
BLANC  
WEIß

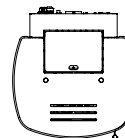
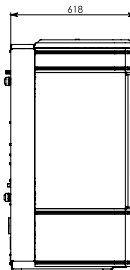
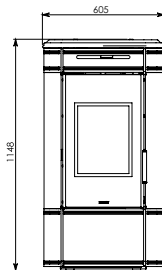
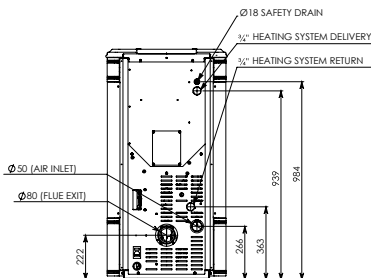
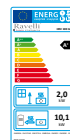
NERO  
BLACK  
NOIR  
SCHWARZ

BORDEAUX  
BORDEAUX  
BORDEAUX  
BORDEAUX

100% SAFE  
INTELLIGENT  
BRAZIER



compliant with  
Ecodesign 2022



## PELLET

### Consumo orario pellet

Pellet fuel consumption for hour  
Consommation de granulés par heure  
Stündlicher Pelletsverbrauch

**kg/h (min/max) 1 - 2,7**

### Rendimento min/max potenza

Efficiency min/max power  
Rendimento min/max puissance  
Wirkungsgrad min/max Leistung

**% 91,1 - 91,2**

### Tubo uscita fumi

Flue exit pipe  
Tuyau de sortie des fumées  
Abgasrohr

**Ø mm 80**

### Capacità serbatoio

Tank capacity  
Capacité du réservoir  
Fassungsvermögen Pelletsbehälter

**Kg 23**

### Autonomia

Burn time  
Autonomie  
Brennzeit

**h 8 - 22**

### Potenza elettrica installata

Installed power  
Puissance installée  
Leistungsbedarf beim Betrieb

**W 75**

### Peso netto

Net weight  
Poids net  
Nettogewicht

**Kg 210**